



**RISLA**  
College  
Planning  
Center

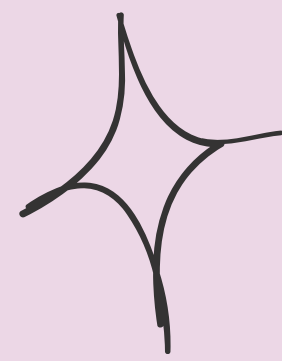
PRESENTS

# **The Admissions Process**

**\*NO NOTES NEEDED! SCAN QR CODE**







# How to search for colleges

## Guidance Office



## Internet Search



## Family & Friends





# Where should I apply?

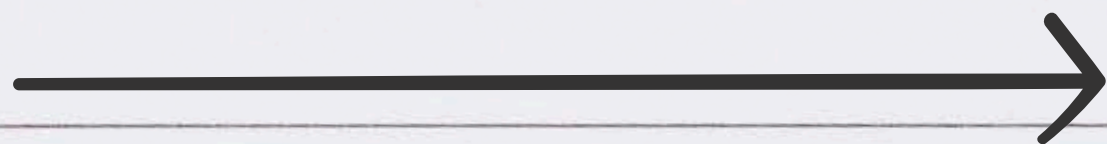
- City or small college town?
- What size college appeals to you?
- Public or private?
- What kind of weather do you prefer?
- Does your major require special facilities?
- Do you need academic structure?
- Affordability?
- Athletics?







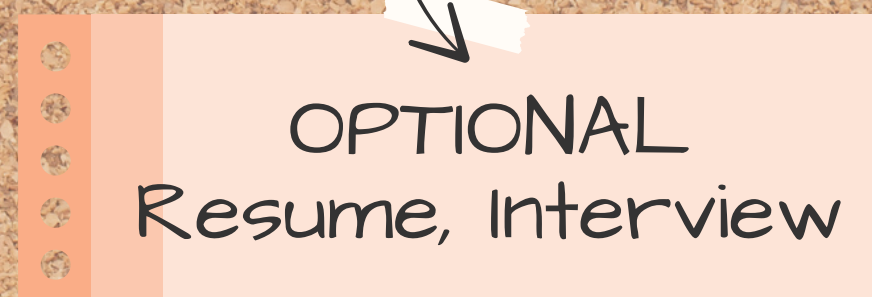
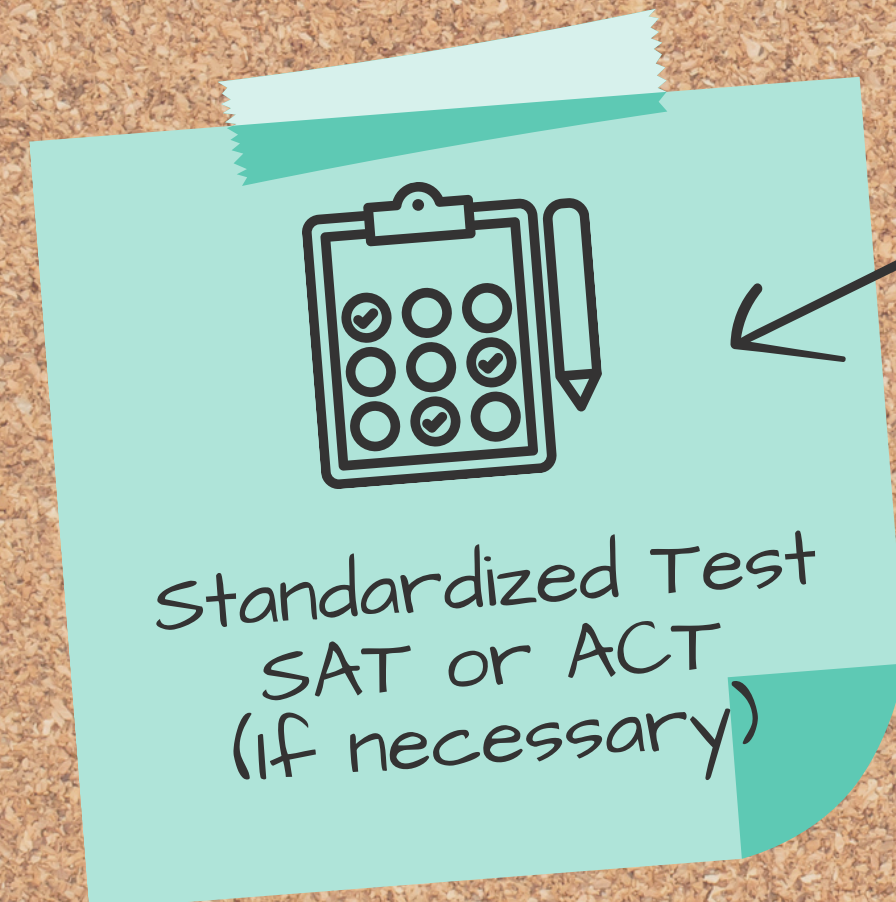
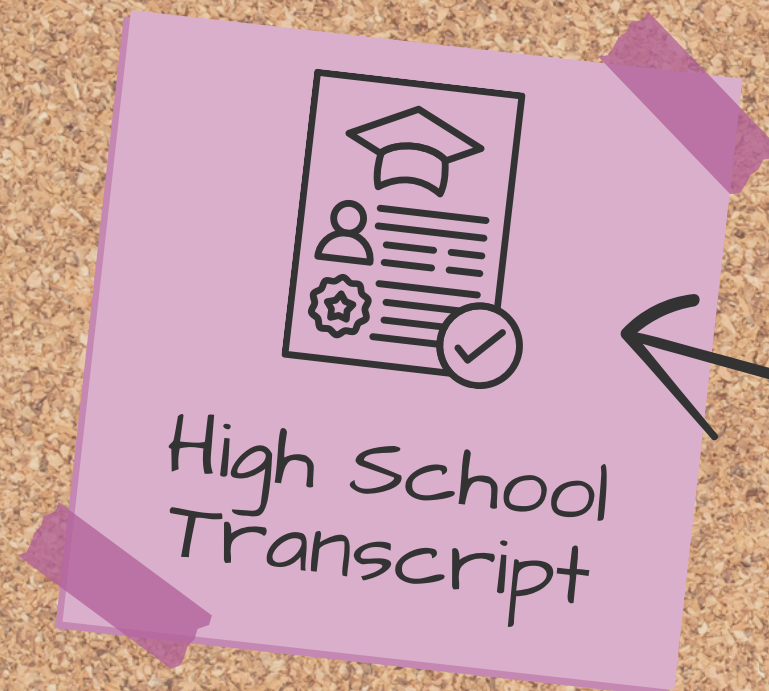
# School Visits



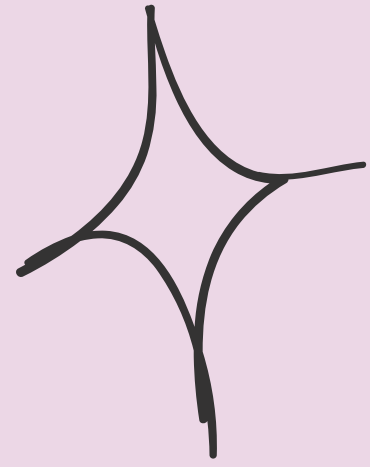
- Visit colleges when classes are in session.
- If offered, request an overnight visit.
- Attend classes.
- Visit the student union.
- Visit career services.
- Talk to as many people as possible.
- Read a copy of the latest student newspaper.
- Check out school's social media.



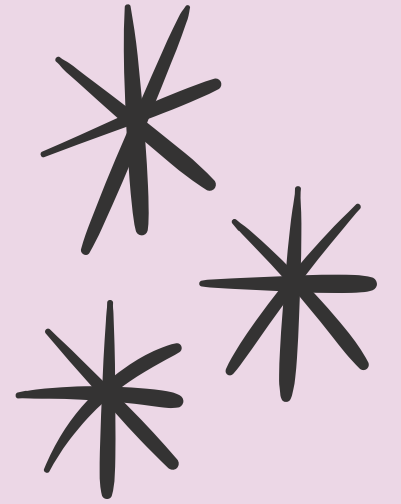








# How many schools should you apply to?

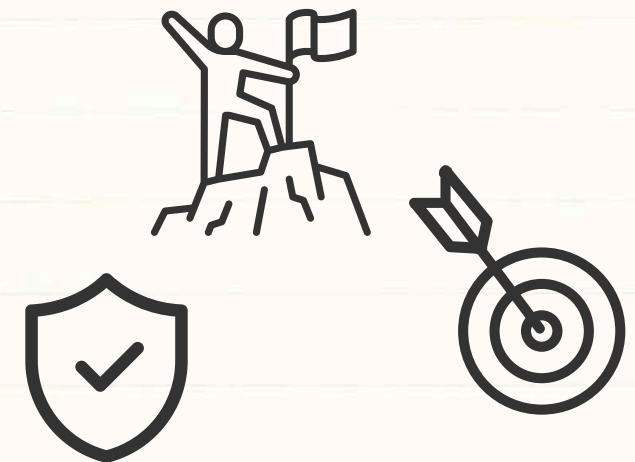


## My Preference

- No more than 8.
- One that you are relatively certain that you will be accepted to and that you can afford.

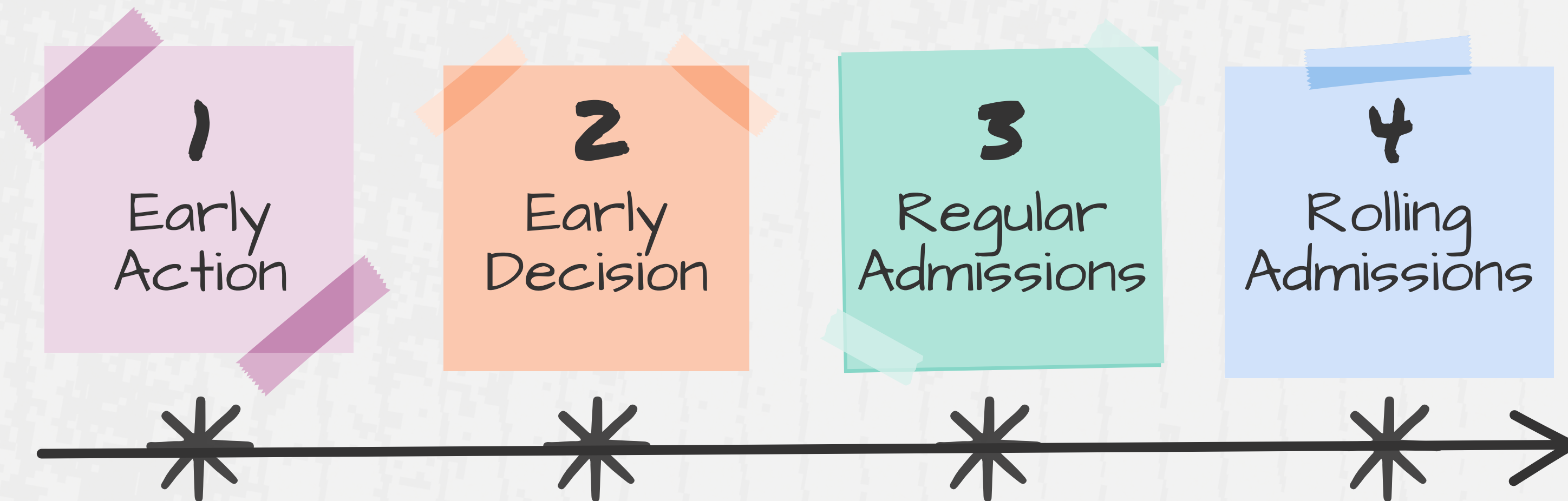
## 4 to 8

- Reach
- Possible
- Safety





# Know the Terms





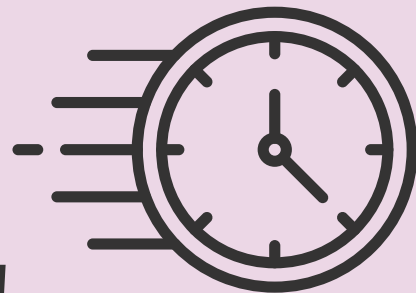
# Ready to Apply

## 3 Things to Remember!

Deadlines!

Deadlines!

Deadlines!



## The Common Application Online



[commonapp.org](https://commonapp.org)





#1

# The Application

---

- Do not rush – start early.
- Answer all questions on the application.
- Make sure guidance uploads the transcript.
- Make sure recommendations are uploaded.



#2

# The Essay

- Follow instructions on the application: word count, font size, and formatting.
- Tell them something that they do not already know.
- Stick to the prompt.
- When appropriate, be creative.
- **PROOFREAD!!!!**





#3

# The Resume

---



- Activities
- Community service
- Work experience
- Honors and recognition





A purple sticky note with a black outline of a schoolhouse and an upward-pointing arrow.

# Admissions Decisions

- Strength of curriculum/Level of Challenge.
- Choice of senior year courses.
- Grades in all academic courses.
- Standardized tests
- Essay
- Creativity, initiative, leadership & personal qualities that help you stand out.







# Help is available!

College planning and financial aid guidance at the:  
**College Planning Center of RI**

Schedule online at  
[collegeplanningcenter.org](https://collegeplanningcenter.org)

Call to schedule an appointment  
**401-736-3170**

For a copy of this presentation  
1. Scan this code with your phone  
2. Select Admissions

**Follow Us!**



[@risla.college.planning.center](https://www.instagram.com/risla.college.planning.center)



[@risla.college.planning.center](https://www.facebook.com/risla.college.planning.center)



[@CPCRI](https://twitter.com/CPCRI)